



+20
YEARS
EXPERIENCE

LIFTING ELEMENTS
TAŞIMA ELEMENLARI
TRAGELEMENTE
ELEMENTI DI SOLLEVAMENTO

2

1

Group code
Grup kodu
Gruppen kod

2

Product definitions
Ürün açıklaması
Produkt information

3

Technical drawing area
Teknik çizim alanı
Technische zeichnung

4

Picture of the product
Ürün resmi
Produkt foto

5

Technical information
Teknik bilgi ve açıklama
Technische Informationen

6

The main group code
Ana grup kodu
Haupt kod

7

Ordering codes
Sipariş kodları
Bestellnummer

8

Ordering codes and
dimension table
Sipariş kodları ve ölçülendirme tablosu
Bestellnummer und Maße

9

Ordering example
Sipariş kodu oluşturma örneği
Bestellbeispiel

1 G213-01

Steel Headed Guide Bushes Oil Groove
Çelik Kanallı İnce Kılavuz Burçlar
Führungsbuchsen mit Bund Stahl

3

4

Material :
16MnCr5
HRC 58 + 62

5

6 GSB CODE: G213-01

Code	d -1	d1 Ø1	d2 Ø2	d3	l	l1	l2
G213-01-020-070	20	20	28	34	70	47	23
G213-01-025-080	25	25	34	39	80	57	23
G213-01-030-090	30	30	39	44	90	53	37
G213-01-040-100	40	40	50	54	100	63	37
G213-01-050-120	50	50	60	64	120	73	47

9 Order Example:
d1= 20 and l= 70
Order Code: G213-01-020-070







www.gsb-oiless.com

info@gsb-oiless.com

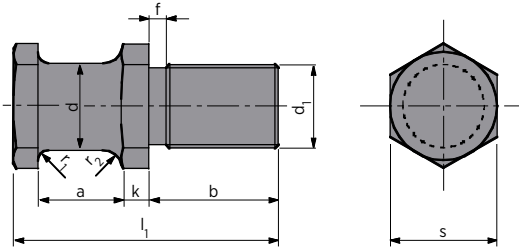
Index

Contents	Page	Contents	Page
 <p>C101-02 Lifting Pins VDI 3366 Taşıma Pimleri VDI 3366 Tragschrauben VDI 3366</p>	2.5	 <p>C103-04 Lifting Pins BMW Taşıma Milleri BMW Tragbolzen mit Fallringsicherung BMW</p>	2.12
 <p>C101-04 Lifting Brackets VDI 3366 Taşıma Milleri VDI 3366 Tragzapfen VDI 3366</p>	2.6	 <p>C103-04 Lifting Pins NAAMS Taşıma Milleri NAAMS Tragbolzen mit Fallringsicherung NAAMS Norm</p>	2.13
 <p>C101-05 Lifting Brackets with Rope Stop Safety Emniyet Plakalı Taşıma Braketleri Tragzapfen mit Seilsicherung</p>	2.7	 <p>C103-04 Lifting Pins FCA Taşıma Milleri FCA Tragbolzen mit Fallringsicherung FCA Norm</p>	2.14
 <p>C103-01 Lifting Pins VDI 3366 Taşıma Milleri VDI 3366 Tragbolzen mit Fallringsicherung VDI 3366</p>	2.8	 <p>C103-05 Lifting Pins CNOMO Taşıma Milleri CNOMO Tragbolzen mit Fallringsicherung Und Feder Nach CNOMO</p>	2.15
 <p>C103-01 Lifting Pins MERCEDES BENZ Taşıma Milleri MERCEDES BENZ Tragbolzen mit Fallringsicherung MERCEDES BENZ</p>	2.9	 <p>C103-06 Lifting Pins OPEL - GM Taşıma Milleri OPEL - GM Tragbolzen mit Fallringsicherung OPEL - GM Norm</p>	2.16
 <p>C103-02 Lifting Pins FCA Taşıma Milleri FCA Tragbolzen mit Fallringsicherung Und Feder Nach FCA Norm</p>	2.10	 <p>C103-07 Lifting Pins FCA Taşıma Milleri FCA Ersatztragbolzen für Tragwange FCA Norm</p>	2.17
 <p>C103-03 Lifting Pins FORD Taşıma Milleri FORD Tragbolzen mit Fallringsicherung FORD</p>	2.11	 <p>C103-09 Lifting Pins VW/AUDI Taşıma Milleri VW/AUDI Tragbolzen mit Fallringsicherung Und Feder Nach VW/AUDI Norm</p>	2.18

Index

Contents	Page	Contents	Page
 <p>C104-01 Bush For Lifting Pins VDI-BAK Taşıma Milleri için Burçlar VDI-BAK Stahlbuchsen für Transportwangen VDI-BAK</p>	2.19		
 <p>C104-02 Bush For Lifting Pin FORD Taşıma Milleri için Burçlar FORD Stahlbuchsen für Transportwangen FORD</p>	2.20		
 <p>C105-01 Lifting Brackets with Pins AFNOR Taşıma Braketleri AFNOR Tragwange mit Tragbolzen Nach AFNOR</p>	2.21		
 <p>C105-02 Lifting Brackets with Pins FCA Taşıma Braketleri FCA Tragwange mit Tragbolzen Nach FCA Norm</p>	2.22		
 <p>C105-03 Lifting Brackets with Pins BMW Taşıma Braketleri BMW Tragwange mit Tragbolzen Nach BMW Norm</p>	2.23		
 <p>C105-04 Lifting Brackets with Pins VW/AUDI Taşıma Braketleri VW/AUDI Tragwange mit Tragbolzen Nach VW/AUDI Norm</p>	2.24		


 Material :
 CK45

 700 ÷ 800 N/mm²

WARNING!

For safety reasons, the weight of the tool has to be supported by just two lifting pins.

Respect the max. load
UYARI!

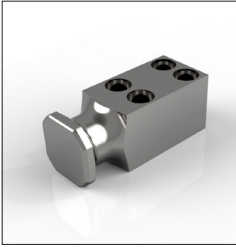
Güvenlik nedeniyle kalıp ağırlığı iki adet taşıma piminin taşıyabileceği maksimum yük miktarını aşmamalıdır.

Maksimum yükü göz ardı etmeyiniz
ACHTUNG!

Aus Sicherheitsgründen achten Sie immer dass zwei Tragbolzen das gesamte Werkzeugs gewicht tragen müssen.

Maximale Nutzlast beachten
GSB CODE: C101-02

Code	Max. Load (kg)	Max. Die Weight (kg)	d ±0,1	d ₁	a	b ±0,5	f	k	l ₁ ±1	r ₁	r ₂	s
C101-02-016-016	250	500	16	M16	20	28	3	5	58	5	8	24
C101-02-020-020	500	1000	20	M20	22	34	3	6	68	5	8	30
C101-02-025-024	1000	2000	25	M24	25	38	4	8	78	6	10	36
C101-02-032-030	1500	3000	32	M30	32	45	5	10	95	6	10	41
C101-02-040-036	2500	5000	40	M36	40	56	5	12	118	8	12	50



Material :
CK45

700 ÷ 800 N/mm²

Designed according to
VDI 3366 03/17

WARNING!

For safety reasons, the weight of the tool has to be supported by just two lifting brackets.

Respect the max. load

UYARI!

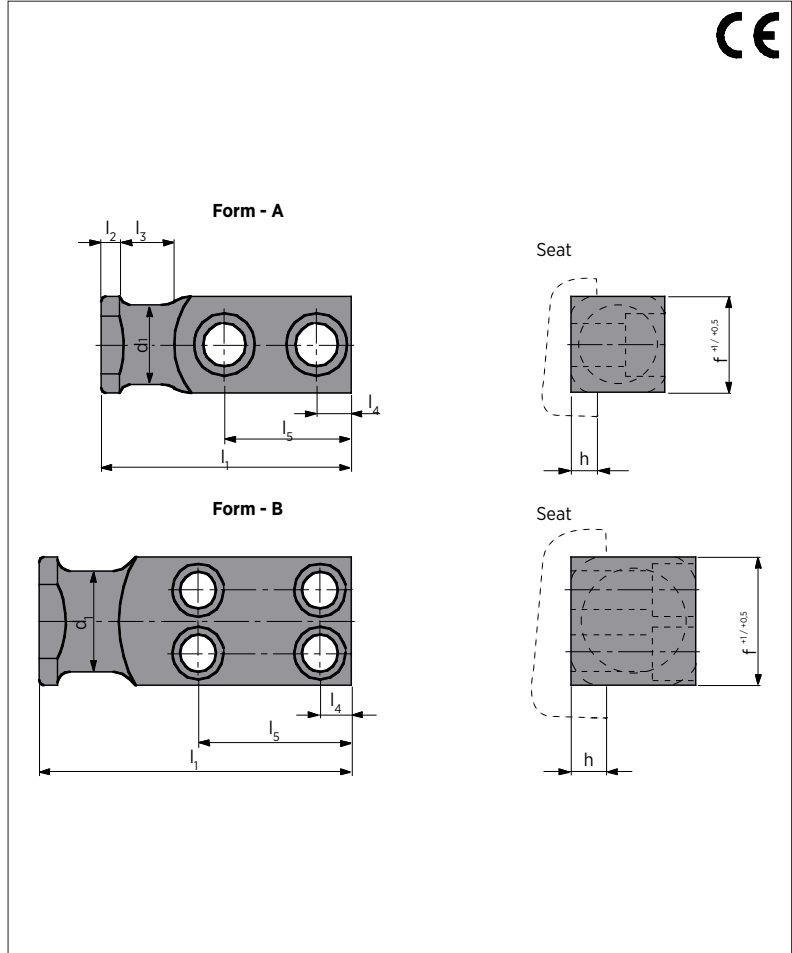
Güvenlik nedeniyle kalıp ağırlığı iki adet taşıma piminin taşıyabileceği maksimum yük miktarını aşmamalıdır.

Maksimum yükü göz ardı etmeyiniz

ACHTUNG!

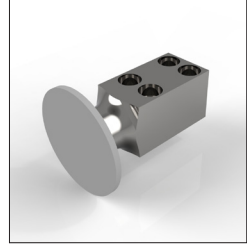
Aus Sicherheitsgründen achten Sie immer dass zwei Tragbolzen das gesamte Werkzeugs gewicht tragen müssen.

Maximale Nutzlast beachten



GSB CODE: C101-04

Code	Max. Load (kg)	Max. Die Weight (kg)	Form	d ₁	f	h	l ₁	l ₂	l ₃	l ₄	l ₅	DIN EN ISO 4762 - Screw 8.8
C101-04-020-080	320	640	A	16	20	6	80	6	20	10	44	M8x30
C101-04-025-090	630	1260	A	20	25	8	90	8	25	10	47	M10x35
C101-04-035-100	1250	2500	A	25	35	10	100	8	30	12	50	M12x40
C101-04-040-120	2000	4000	A	32	40	10	120	10	32	16	62	M16x55
C101-04-050-140	3200	6400	A	40	50	12	140	10	40	18	72	M20x70
C101-04-060-160	5000	10000	A	50	60	14	160	12	45	22	81	M24x70
C101-04-080-200	8000	16000	B	63	80	16	200	12	50	20	98	M20x100
C101-04-100-250	12500	25000	B	80	100	18	250	15	65	25	125	M24x110
C101-04-120-300	20000	40000	B	100	120	20	300	15	80	30	155	M30x130


 Material :
 CK45

 700 ÷ 800 N/mm²

 Designed according to BMW
 Norm B2 5602 11 06/2012

WARNING!

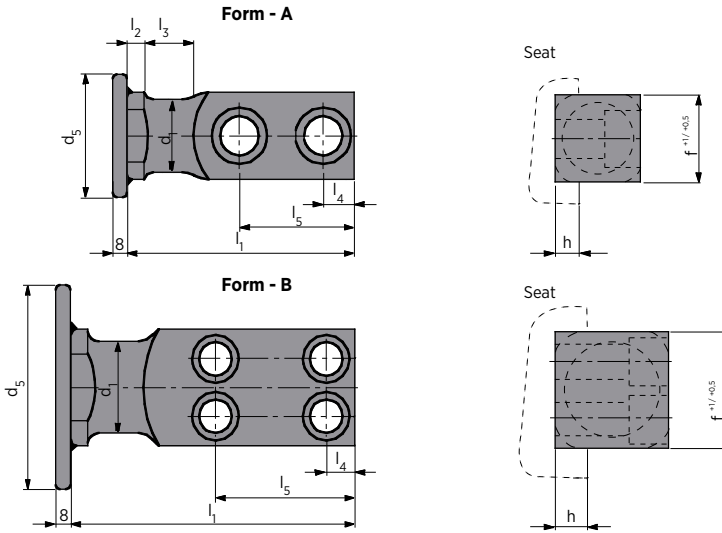
For safety reasons, the weight of the tool has to be supported by just two lifting brackets.

Respect the max. load
UYARI!

Güvenlik nedeniyle kalıp ağırlığı iki adet taşıma piminin taşıyabileceği maksimum yük miktarını aşmamalıdır.

Maksimum yükü göz ardı etmeyiniz
ACHTUNG!

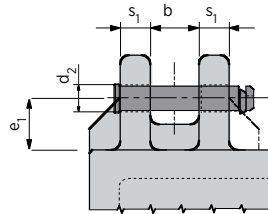
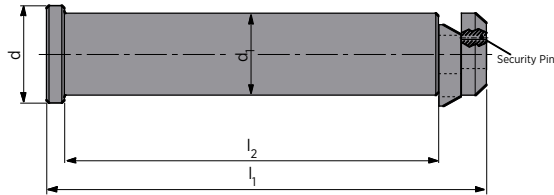
Aus Sicherheitsgründen achten Sie immer dass zwei Tragbolzen das gesamte Werkzeugs gewicht tragen müssen.

Maximale Nutzlast beachten

GSB CODE: C101-05

Code	Max. Load (kg)	Max. Die Weight (kg)	Form	d ₁	d _s	f	h	l ₁	l ₂	l ₃	l ₄	l ₅	DIN EN ISO 4762 - Screw 8.8
C101-05-020-080	320	640	A	16	60	20	6	80	6	20	10	44	M8x30
C101-05-025-090	630	1260	A	20	70	25	8	90	8	25	10	47	M10x35
C101-05-035-100	1250	2500	A	25	70	35	10	100	8	30	12	50	M12x40
C101-05-040-120	2000	4000	A	32	110	40	10	120	10	32	16	62	M16x55
C101-05-050-140	3200	6400	A	40	110	50	12	140	10	40	18	72	M20x70
C101-05-060-160	5000	10000	A	50	150	60	14	160	12	45	22	81	M24x70
C101-05-080-200	8000	16000	B	63	150	80	16	200	12	50	20	98	M20x100
C101-05-100-250	12500	25000	B	80	150	100	18	250	15	65	25	125	M24x110
C101-05-120-300	20000	40000	B	100	150	120	20	300	15	80	30	155	M30x130



Designed according to
VDI 3366 03/1997


WARNING!

For safety reasons, the weight of the tool has to be supported by just two lifting pins.

Respect the max. load
UYARI!

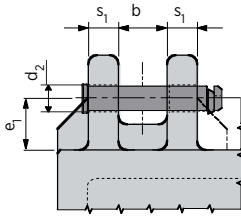
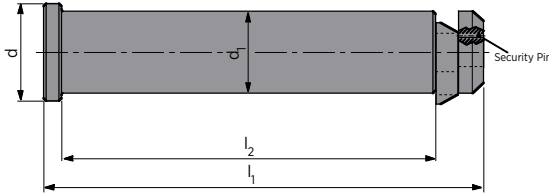
Güvenlik nedeniyle kalıp ağırlığı iki adet taşıma piminin taşıyabileceği maksimum yük miktarını aşmamalıdır.

Maksimum yükü göz ardı etmeyiniz
ACHTUNG!

Aus Sicherheitsgründen achten Sie immer dass zwei Tragbolzen das gesamte Werkzeugs gewicht tragen müssen.

Maximale Nutzlast beachten
GSB CODE: C103-01

Code	Max. Load (kg)	Max. Die Weight (kg)	d	d ₁ h ₁₁	d ₂ +1	e ₁	h +1	l ₂ +1	s ₁	b	Material
C103-01-032-175	3200	6400	40	32	34	63	175	145	40	60	CK45
C103-01-040-225	5000	10000	50	40	42	80	225	188	50	80	CK45
C103-01-050-273	8000	16000	60	50	52	100	273	230	60	100	CK45
C103-01-063-347	12500	25000	75	63	65	125	347	295	80	120	CK45
C103-01-076-422	31500	63000	95	76	78	160	422	360	100	140	42CrMo4+QT



Material:
42CrMo4+QT

Designed according to
B8 2002 231 009 001 06/2019

WARNING!

For safety reasons, the weight of the tool has to be supported by just two lifting pins.

Respect the max. load

UYARI!

Güvenlik nedeniyle kalıp ağırlığı iki adet taşıma piminin taşıyabileceği maksimum yük miktarını aşmamalıdır.

Maksimum yükü göz ardı etmeyiniz

ACHTUNG!

Aus Sicherheitsgründen achten Sie immer dass zwei Tragbolzen das gesamte Werkzeugs gewicht tragen müssen.

Maximale Nutzlast beachten

GSB CODE: C103-01

Code	Max. Load (kg)	Max. Die Weight (kg)	d	d ₁ h ₁₁	d ₂ +1	e ₁	l ₁ +1	l ₂ +1	s ₁	b
C103-01-032-017	3200	6400	40	32	34	63	175	145	40	60
C103-01-040-022	5000	10000	50	40	42	80	225	188	50	80
C103-01-050-027	8000	16000	60	50	52	100	273	230	60	100
C103-01-063-034	12500	25000	75	63	65	125	347	295	80	120
C103-01-076-042	31500	63000	95	76	78	160	422	360	100	140



Designed according to FCA Norm
095.90.30
095.90.35

*Designed according to FCA Norm
STQ 40002 04/12/2014

Only for replacement
* Sadece değişim için
Nur zur Reparatur

WARNING!

For safety reasons, the weight of the tool has to be supported by just two lifting pins.

Respect the max. load

UYARI!

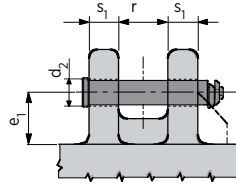
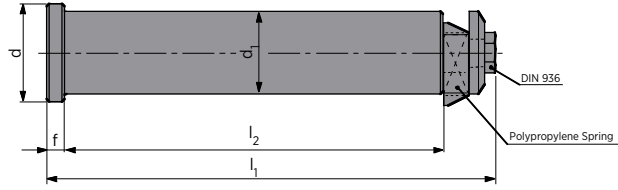
Güvenlik nedeniyle kalıp ağırlığı iki adet taşıma piminin taşıyabileceği maksimum yük miktarını aşmamalıdır.

Maksimum yükü göz ardı etmeyiniz

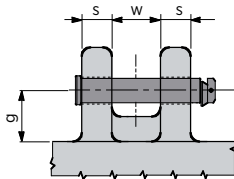
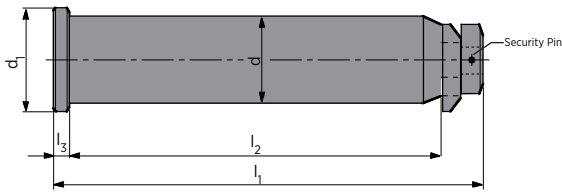
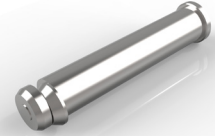
ACHTUNG!

Aus Sicherheitsgründen achten Sie immer dass zwei Tragbolzen das gesamte Werkzeugs gewicht tragen müssen.

Maximale Nutzlast beachten


GSB CODE: C103-02

Code	Max. Load (kg)	Max. Die Weight (kg)	d	d ₁ h ₁₁	d ₂	e ₁	f	h ₁	l ₂	r	s ₁	Material
C103-02-029-150	4000	8000	38	29	30	60	6	178,5	150	60	40	42CrMo4+QT
C103-02-033-170	7000	14000	43	33	35	65	6	200,5	170	60	50	42CrMo4+QT
*C103-02-043-195	5000	10000	53	43	45	85	8	233	195	80	50	CK45
*C103-02-053-235	8000	16000	65	53	55	105	10	282	235	100	60	CK45
C103-02-053-180	16000	32000	65	53	55	75	10	227	180	65	50	42CrMo4+QT
C103-02-063-215	13000	26000	78	63	65	100	12	272,5	215	80	60	42CrMo4+QT
*C103-02-063-295	12000	24000	78	63	65	130	12	352,5	295	120	80	CK45
*C103-02-078-355	30000	60000	95	78	81	150	14	421,5	355	140	100	CK45



Material :
42CrMo4+QT

Designed according to FORD
Norm WDX22-60M 12/2015

WARNING!

For safety reasons, the weight of the tool has to be supported by just two lifting pins.

Respect the max. load
UYARI!

Güvenlik nedeniyle kalıp ağırlığı iki adet taşıma piminin taşıyabileceği maksimum yük miktarını aşmamalıdır.

Maksimum yükü göz ardı etmeyiniz
ACHTUNG!

Aus Sicherheitsgründen achten Sie immer dass zwei Tragbolzen das gesamte Werkzeugs gewicht tragen müssen.

Maximale Nutzlast beachten
GSB CODE: C103-03

Code	Max. Load (kg)	Max. Die Weight (kg)	d _{-0,3}	d ₁	g _{min.}	l _{±1}	l ₂	l ₃	s	w
C103-03-035-125	1500	3000	35	45	60	165	125	10	30	50
C103-03-050-190	5500	10050	50	63	130	230	190	10	50	70
C103-03-063-280	23000	45500	63	76	145	320	280	10	80	100
C103-03-080-320	30000	60000	80	89	145	370	320	15	100	100



Material :
CK45

Designed according to BMW
Standard B2 5605 11 11/2013

WARNING!

For safety reasons, the weight of the tool has to be supported by just two lifting pins.

Respect the max. load

UYARI!

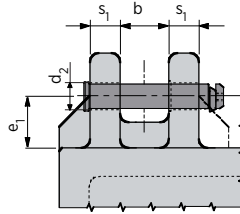
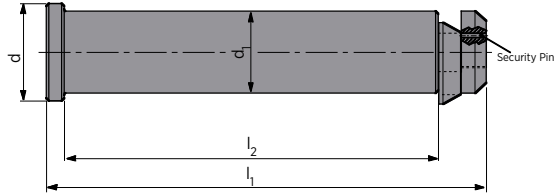
Güvenlik nedeniyle kalıp ağırlığı iki adet taşıma piminin taşıyabileceği maksimum yük miktarını aşmamalıdır.

Maksimum yükü göz ardı etmeyiniz

ACHTUNG!

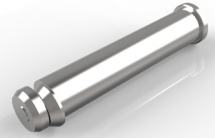
Aus Sicherheitsgründen achten Sie immer dass zwei Tragbolzen das gesamte Werkzeugs gewicht tragen müssen.

Maximale Nutzlast beachten



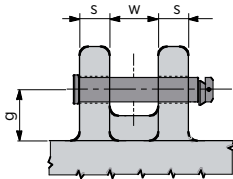
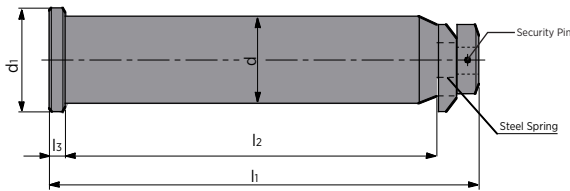
GSB CODE: C103-04

Code	Max. Load (kg)	Max. Die Weight (kg)	d	d _{h11}	d ₂	e ₁	h ₊₁	l ₂	s ₁	b
C103-04-030-158	3200	6400	40	30	32	40	158	129	38	38
C103-04-040-187	5000	10000	50	40	42	50	187	155	45	45
C103-04-050-220	8000	16000	60	50	52	60	220	180	50	50
C103-04-060-246	12500	25000	70	60	62	65	246	205	60	60
C103-04-080-305	18000	36000	90	80	82	90	305	255	75	75



Material :
42CrMo4+QT

Designed according FORD
Norm WDX22-80 11/2018


WARNING!

For safety reasons, the weight of the tool has to be supported by just two lifting pins.

Respect the max. load
UYARI!

Güvenlik nedeniyle kalıp ağırlığı iki adet taşıma piminin taşıyabileceği maksimum yük miktarını aşmamalıdır.

Maksimum yükü göz ardı etmeyiniz
ACHTUNG!

Aus Sicherheitsgründen achten Sie immer dass zwei Tragbolzen das gesamte Werkzeugs gewicht tragen müssen.

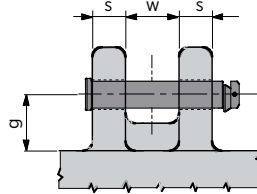
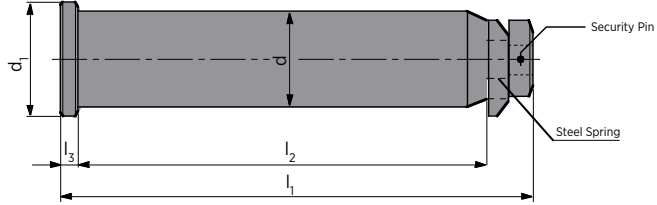
Maximale Nutzlast beachten
GSB CODE: C103-04

Code	Max. Load (kg)	Max. Die Weight (kg)	d _{-0,3}	d ₁	g min.	l _{±1}	l ₂	l ₃	s	w
C103-04-050-190	5000	10000	50	63	130	230	190	10	50	70
C103-04-063-280	20000	40000	63	76	145	320	280	10	80	100
C103-04-080-320	30000	60000	80	89	145	370	320	15	100	100



Material :
42CrMo4+QT

Designed according FCA Norm
095.90.30



WARNING!

For safety reasons, the weight of the tool has to be supported by just two lifting pins.

Respect the max. load

UYARI!

Güvenlik nedeniyle kalıp ağırlığı iki adet taşıma piminin taşıyabileceği maksimum yük miktarını aşmamalıdır.

Maksimum yükü göz ardı etmeyiniz

ACHTUNG!

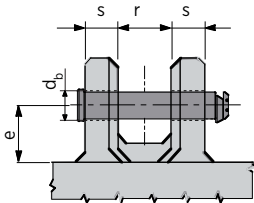
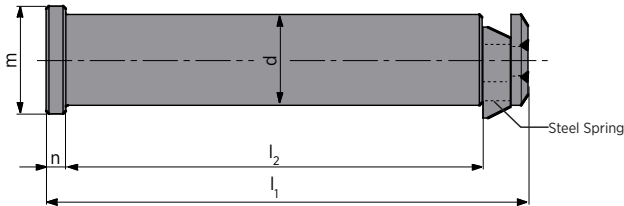
Aus Sicherheitsgründen achten Sie immer dass zwei Tragbolzen das gesamte Werkzeugs gewicht tragen müssen.

Maximale Nutzlast beachten

GSB CODE: C103-04

Code	Max. Load (kg)	Max. Die Weight (kg)	d _{-0,3}	d ₁	g _{min.}	l ₁	l ₂	l ₃	s	w
C103-04-050-019	10000	20000	50	63	70	230	190	10	50	85
C103-04-063-028	20000	40000	63	76	100	320	280	10	80	110
C103-04-080-032	40000	80000	80	89	105	375	320	15	100	110


 Material :
 CK45

 Designed according CNOMO
 and PSA Norm
 E24.65.000 G, 05/2014

WARNING!

For safety reasons, the weight of the tool has to be supported by just two lifting pins.

Respect the max. load
UYARI!

Güvenlik nedeniyle kalıp ağırlığı iki adet taşıma piminin taşıyabileceği maksimum yük miktarını aşmamalıdır.

Maksimum yükü göz ardı etmeyiniz
ACHTUNG!

Aus Sicherheitsgründen achten Sie immer dass zwei Tragbolzen das gesamte Werkzeugs gewicht tragen müssen.

Maximale Nutzlast beachten
GSB CODE: C103-05

Code	Max. Load (kg)	Max. Die Weight (kg)	d h11	db +0,5	e	l1 ±1	l2	m	n	r	s
C103-05-032-132	6000	12000	32	34	55	154	132	40	6	50	37,5
C103-05-040-170	9000	18000	40	42	70	197,5	170	50	8	65	47,5
C103-05-050-212	14000	28000	50	52	90	247,5	212	63	10	80	60
C103-05-063-265	22500	45000	63	65	100	309	265	80	12	100	75



Material :
42CrMo4+QT

Designed according OPEL - GM
Norm 90.15.00 01/2014

WARNING!

For safety reasons, the weight of the tool has to be supported by just two lifting pins.

Respect the max. load

UYARI!

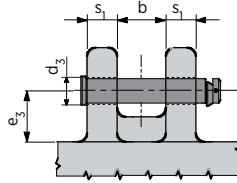
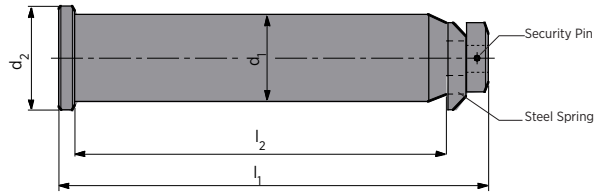
Güvenlik nedeniyle kalıp ağırlığı iki adet taşıma piminin taşıyabileceği maksimum yük miktarını aşmamalıdır.

Maksimum yükü göz ardı etmeyiniz

ACHTUNG!

Aus Sicherheitsgründen achten Sie immer dass zwei Tragbolzen das gesamte Werkzeugs gewicht tragen müssen.

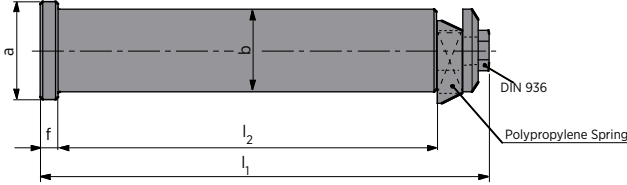
Maximale Nutzlast beachten



GSB CODE: C103-06

Code	Max. Load (kg)	Max. Die Weight (kg)	b	d ₁ -0,2	d ₂	d ₃	e ₃	h ₊₁	l ₂ +1	s ₁
C103-06-032-155	3400	6800	70	32	40	34	65	177	155	40
C103-06-040-188	5650	11300	80	40	50	42	85	220	188	50
C103-06-050-230	8950	17900	100	50	60	52	100	270	230	60
C103-06-063-295	14350	28700	120	63	75	65	125	342	295	80
C103-06-080-335	26700	53400	120	80	89	82	160	387	335	100


 Material :
 CK45

 Designed according FCA Norm
 095 90.75.11

WARNING!

For safety reasons, the weight of the tool has to be supported by just two lifting pins.

Respect the max. load
UYARI!

Güvenlik nedeniyle kalıp ağırlığı iki adet taşıma piminin taşıyabileceği maksimum yük miktarını aşmamalıdır.

Maksimum yükü göz ardı etmeyiniz
ACHTUNG!

Aus Sicherheitsgründen achten Sie immer dass zwei Tragbolzen das gesamte Werkzeugs gewicht tragen müssen.

Maximale Nutzlast beachten
GSB CODE: C103-07

Code	Max. Load (kg)	Max. Die Weight (kg)	a	b h _m	f	l ₁	l ₂
C103-07-00600	600	1200	25	15,6	6	102,5	77
C103-07-01000	1000	2000	30	20,6	6	113,5	96
C103-07-02000	2000	4000	35	25,6	6	128,5	100
C103-07-04000	4000	8000	43	33	6	166,5	135
C103-07-07000	7000	14000	53	43	8	210,5	175



Designed according VW/AUDI Norm 39D 866 09/2011

Only for replacement, until exhaustion of stocks

* Sadece değişim için, stoklar tükeninceye kadar
Nur zur Reparatur, bis Bestand aufgebraucht ist

WARNING!

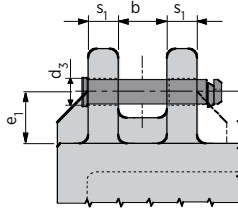
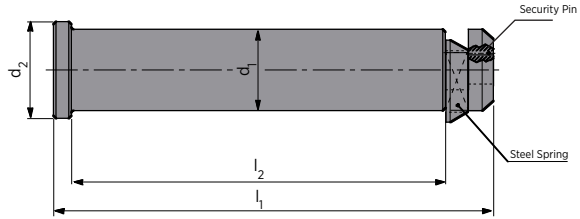
For safety reasons, the weight of the tool has to be supported by just two lifting pins.

Respect the max. load
UYARI!

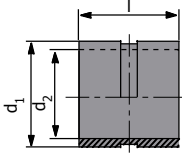
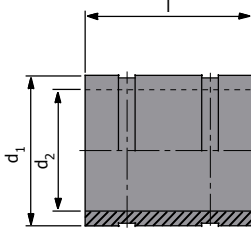
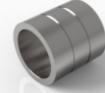
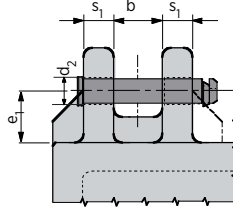
Güvenlik nedeniyle kalıp ağırlığı iki adet taşıma piminin taşıyabileceği maksimum yük miktarını aşmamalıdır.

Maksimum yükü göz ardı etmeyiniz
ACHTUNG!

Aus Sicherheitsgründen achten Sie immer dass zwei Tragbolzen das gesamte Werkzeugs gewicht tragen müssen.

Maximale Nutzlast beachten

GSB CODE: C103-09

Code	Max. Load (kg)	Max. Die Weight (kg)	b	d1 mm	d2	d3	e1	l1	l2	s1	Material
* C103-09-032-175	3200	6400	60	32	40	34	63	175	145	40	CK45
* C103-09-040-225	5000	10000	80	40	50	42	80	225	188	50	CK45
C103-09-050-221	8000	16000	75	50	60	52	80	221	182	51	CK45
* C103-09-050-273	8000	16000	100	50	60	52	100	273	230	60	CK45
C103-09-063-277	12500	25000	80	63	75	65	90	277	225	70	CK45
* C103-09-063-347	12500	25000	120	63	75	65	125	347	295	80	CK45
* C103-09-076-422	31500	63000	140	76	95	78	160	422	360	100	42CrMo4+QT


Form -A

Form -B

 Material :
 St35

WARNING!

For safety reasons, the weight of the tool has to be supported by just two lifting pins.

Respect the max. load
UYARI!

Güvenlik nedeniyle kalıp ağırlığı iki adet taşıma piminin taşıyabileceği maksimum yük miktarını aşmamalıdır.

Maksimum yükü göz ardı etmeyiniz
ACHTUNG!

Aus Sicherheitsgründen achten Sie immer dass zwei Tragbolzen das gesamte Werkzeugs gewicht tragen müssen.

Maximale Nutzlast beachten
GSB CODE:C104-01

Code	Form	d ₁	d ₂	d ₃	l
C104-01-034-040	A	44	34	32	40
C104-01-042-050	A	52	42	40	50
C104-01-052-060	A	62	52	50	60
C104-01-065-080	A	75	65	63	80
C104-01-078-1001	B	100	78	76	100
C104-01-078-1002	B	105	78	76	100



Material :
St37

Designed according FORD
Norm WDX22-60 08/2018

WARNING!

For safety reasons, the weight of the tool has to be supported by just two lifting pins.

Respect the max. load

UYARI!

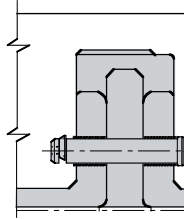
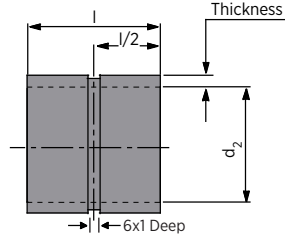
Güvenlik nedeniyle kalıp ağırlığı iki adet taşıma piminin taşıyabileceği maksimum yük miktarını aşmamalıdır.

Maksimum yükü göz ardı etmeyiniz

ACHTUNG!

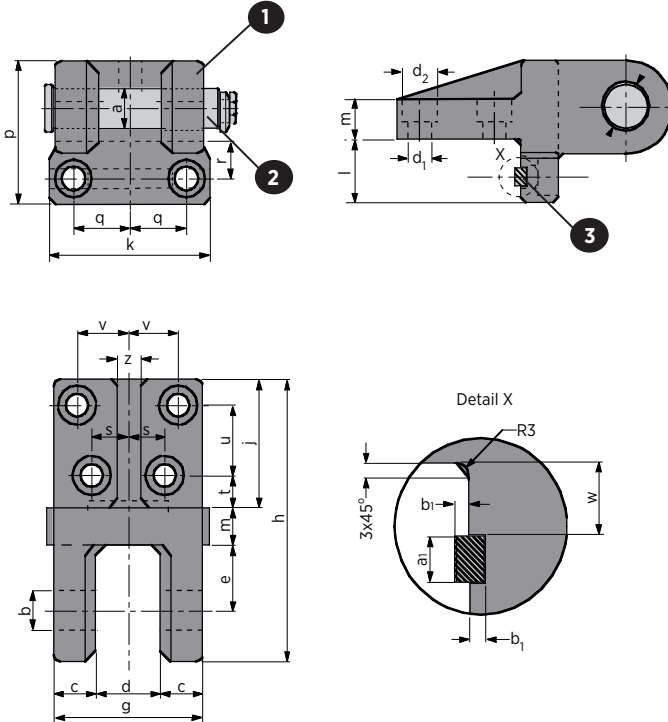
Aus Sicherheitsgründen achten Sie immer dass zwei Tragbolzen das gesamte Werkzeugs gewicht tragen müssen.

Maximale Nutzlast beachten



GSB CODE: C104-02

Code	d ₂ ±0,6	Thickness ±1	l ±0,5
C104-02-040-030	36	4.0	32
C104-02-055-050	52	4.0	52
C104-02-070-080	65	4.0	82
C104-02-090-100	82	5.0	102



Designed according CNOMO Norm EM24.50.400 02/2014

- 1** Material: CK45
800 ÷ 1000 N/mm²
- 2** C103-05
- 3** KEY DIN 6885

Screws not included

WARNING!

For safety reasons, the weight of the tool has to be supported by just two lifting pins.

Respect the max. load
UYARI!

Güvenlik nedeniyle kalıp ağırlığı iki adet taşıma piminin taşıyabileceği maksimum yük miktarını aşmamalıdır.

Maksimum yükü göz ardı etmeyiniz
ACHTUNG!

Aus Sicherheitsgründen achten Sie immer dass zwei Tragbolzen das gesamte Werkzeugs gewicht tragen müssen.

Maximale Nutzlast beachten
GSB CODE: C105-01

Code	Max. Load (kg)	Max. Die Weight (kg)	a	b H13	c	d	d ₁ H13	d ₂ H13	e	g	h	j
C105-01-04000	4000	8000	32	33	35	55	18	28	55	125	221	100
C105-01-06300	6300	12600	40	41	50	60	22	36	60	160	270	125

Code	k	l	m	p	q	r	s	t	u	v	w	z	a ₁ E9	b ₁ +0,1
C105-01-04000	135	50	30	111	48	30	28	20	60	42	24	20	14	4,5
C105-01-06300	180	60	40	140	65	35	40	30	70	55	27	25	16	5



Designed according FCA Norm
STQ 40001 04/12/2014

1 Material: CK45
800 ÷ 1000 N/mm²

2 C103-05

Screws not included

WARNING!

For safety reasons, the weight of the tool has to be supported by just two lifting pins.

Respect the max. load

UYARI!

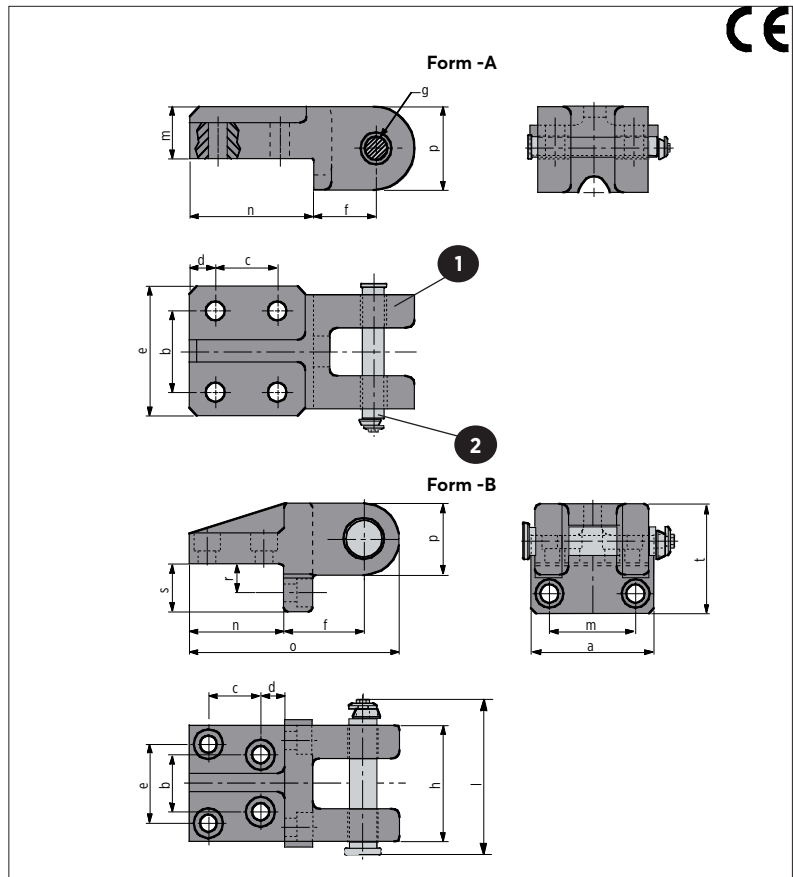
Güvenlik nedeniyle kalıp ağırlığı iki adet taşıma piminin taşıyabileceği maksimum yük miktarını aşmamalıdır.

Maksimum yükü göz ardı etmeyiniz

ACHTUNG!

Aus Sicherheitsgründen achten Sie immer dass zwei Tragbolzen das gesamte Werkzeugsgewicht tragen müssen.

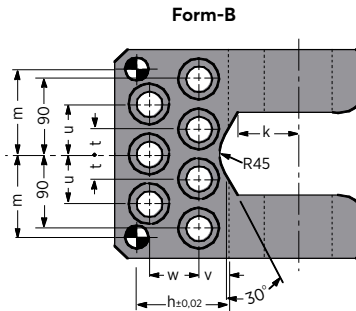
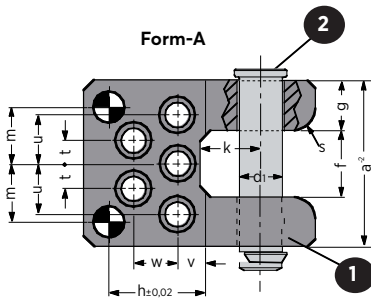
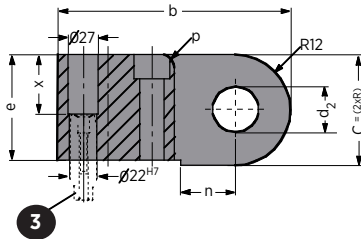
Maximale Nutzlast beachten



GSB CODE: C105-02

Code	Max. Load (kg)	Max. Die Weight (kg)	Form	a	b	c	d	e	f
C105-02-00600	600	1200	A	80	50	40	22,5	-	39
C105-02-01000	1000	2000	A	90	60	40	27,5	-	42
C105-02-02000	2000	4000	A	100	65	65	32,5	-	60
C105-02-04000	4000	8000	B	135	56	60	20	84	85
C105-02-07000	7000	14000	B	180	80	70	30	110	100

Code	g	h	l	m	n	o	p	r	s	t
C105-02-00600	16	70	102,5	32	80	145	52	-	-	-
C105-02-01000	21	79	113,5	36	90	160	56	-	-	-
C105-02-02000	26	90	128,5	50	120	210	70	-	-	-
C105-02-04000	34	125	166,5	96	100	221	72	30	50	111
C105-02-07000	44	160	210,5	130	125	270	90	35	60	140


 Designed according BMW Norm
 B2 5605 11 10/2015

- 1** Material: St52
- 2** C103-04
- 3** Locating pin
M303-02-022045 (x2)

Screws not included

WARNING!

For safety reasons, the weight of the tool has to be supported by just two lifting pins.

Respect the max. load

UYARI!

Güvenlik nedeniyle kalıp ağırlığı iki adet taşıma piminin taşıyabileceği maksimum yük miktarını aşmamalıdır.

Maksimum yükü göz ardı etmeyiniz

ACHTUNG!

Aus Sicherheitsgründen achten Sie immer dass zwei Tragbolzen das gesamte Werkzeuges gewicht tragen müssen.

Maximale Nutzlast beachten

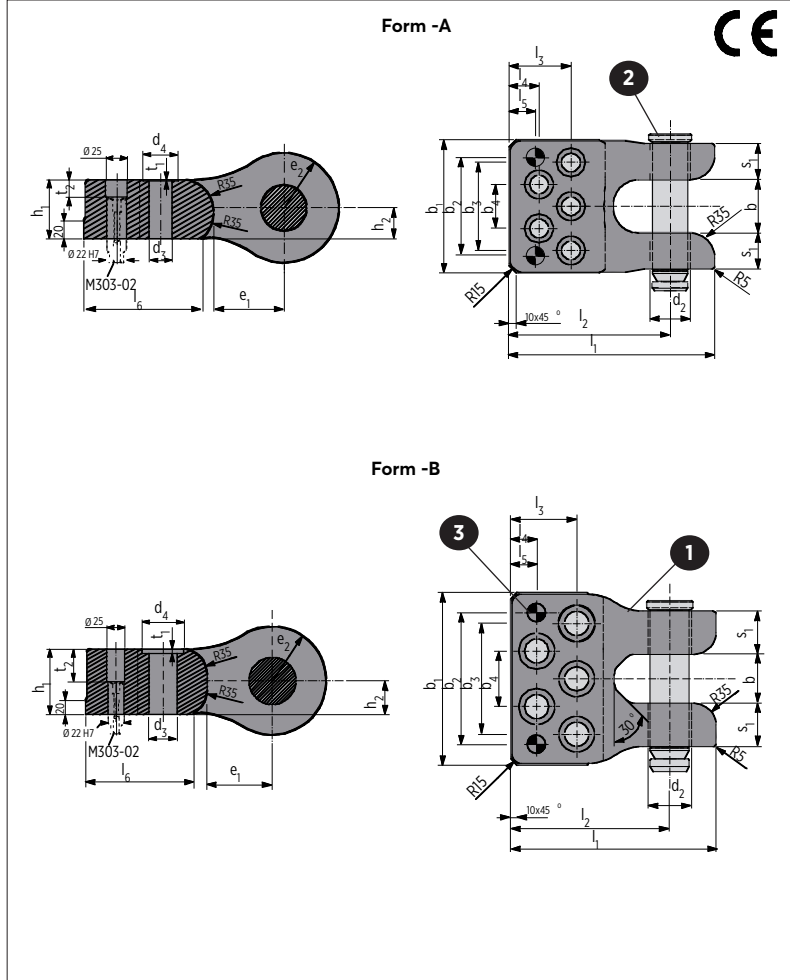
GSB CODE: C105-03

Code	Max. Load (kg)	Max. Die Weight (kg)	Form	d ₁	d ₂	a	b	c	e	f	g
C105-03-06400	3200	6400	A	30	32	126	185	80	75	50	38
C105-03-10000	5000	10000	A	40	42	150	210	100	95	60	45
C105-03-16000	8000	16000	A	50	52	175	240	120	115	75	50
C105-03-25000	12500	25000	A	60	62	200	300	140	130	80	60
C105-03-36000	18000	36000	B	80	82	250	300	160	150	100	75

Code	h	k	m	n	p	s	t	u	v	w	x	Civata
C105-03-06400	85	50	45	40	12	16	20	40	30	35	40	M16x 80
C105-03-10000	87	55	52	50	12	20	22,5	45	25	40	60	M20x100
C105-03-16000	95	70	62,5	60	16	24	25	50	35	45	80	M24x120
C105-03-25000	145	80	77,5	65	20	30	35	65	60	65	95	M36x160
C105-03-36000	105	95	100	90	20	30	30	60	30	60	115	M30x160



- 1** Bracket
Material :
St 52
- 2** Lifting Pin
Material :
CK45
- 3** Locating Pin:
Material:
16MnCr5


WARNING!

For safety reasons, the weight of the tool has to be supported by just two lifting pins.

Respect the max. load
UYARI!

Güvenlik nedeniyle kalıp ağırlığı iki adet taşıma piminin taşıyabileceği maksimum yük miktarını aşmamalıdır.

Maksimum yükü göz ardı etmeyiniz
ACHTUNG!

Aus Sicherheitsgründen achten Sie immer dass zwei Tragbolzen das gesamte Werkzeugs gewicht tragen müssen.

Maximale Nutzlast beachten
GSB CODE: C105-04

Code	Max. Load (kg)	Max. Die Weight (kg)	Form	d ₂	b	s ₁	e ₁	e ₂	h ₁	l ₂	l ₃
C105-04-08000	8000	16000	A	52	75	51	80	62,5	290	227,5	87,5
C105-04-12500	12500	25000	B	65	80	70	90	75	333	258	107

l ₄	l ₅	l ₆	b ₁	b ₂	b ₃	b ₄	h ₁	h ₂	d ₃	d ₄	t ₁	t ₂
42,5	37,5	135	188	137	124	62	67	35	26	40	2	20
42	42	150	280	224	180	90	91	47	39	58	7	46

GSB®



GSB OILLESS İmalat San. ve Tic. Ltd. Şti.

📍 **Headquarter:** Aydınlı Mahallesi, İAYOSB,
Mermerciler Caddesi No: 55 Tuzla 34953
İstanbul / Türkiye

☎ +90 216 442 10 89 📠 +90 216 457 14 95

📍 **Branch:** Üçevler Mahallesi, Küçük Sanayi Sitesi,
17 B Blok No: 15 Nilüfer 16100 Bursa / Türkiye

☎ +90 224 443 48 15 📠 +90 224 443 48 14

🌐 <https://tr.linkedin.com/gsb-oilless-ltd>

📺 <https://www.youtube.com/gsb-oilless>

✉ info@gsb-oilless.com

🌐 www.gsb-oilless.com



2020